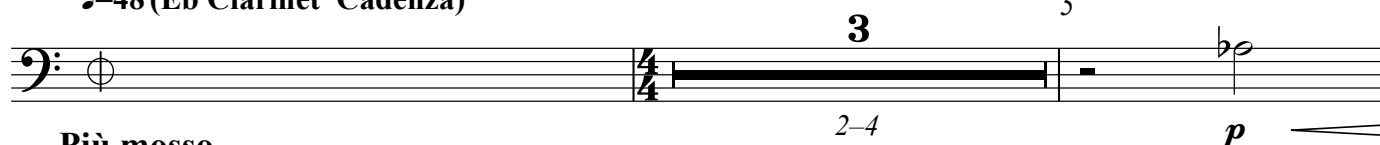


Tenor- Bass Trombone

Concerto for Piccolo Clarinet and Chamber Orchestra

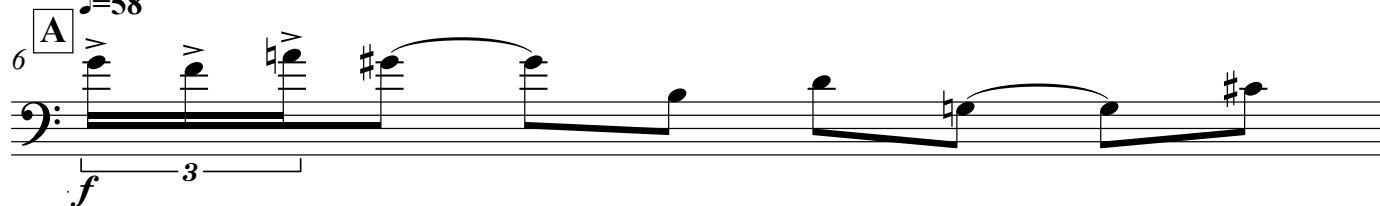
WILLIAM NEIL

♩=48 (Eb Clarinet Cadenza)



Più mosso

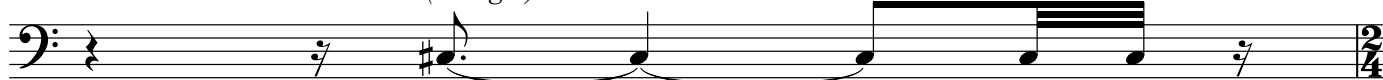
♩=58



Lento accel.

22 **E** ♩=50

con sord. (straight)



Allegro

p

Subito doppio meno mosso accel. Allegro

23 ♩=100

24 ♩=50

25 ♩=100



p

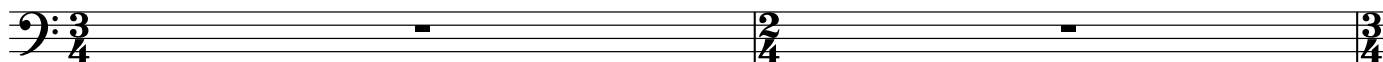
ff

Subito doppio meno mosso accel.

Allegro

26 ♩=50

27 ♩=100



Subito doppio meno mosso accel.

Allegro

28 ♩=50

29 ♩=100



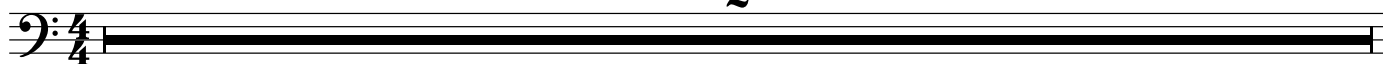
sffp

ff

Subito doppio meno mosso

♩=50 *via sord.*

2



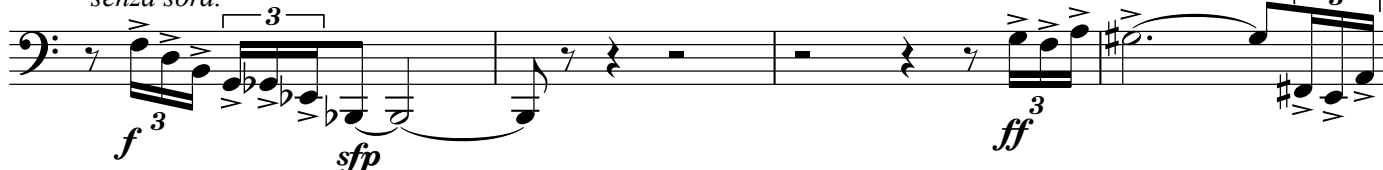
30-31

32 *senza sord.*

33

34

35



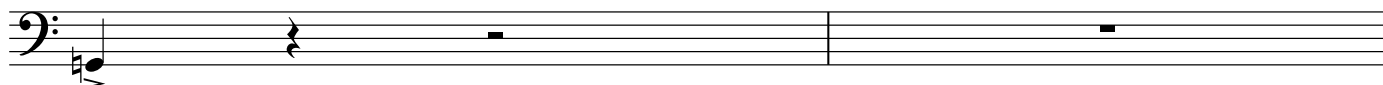
f

sfp

ff

36 **F** **Più mosso** ♩=58

37



Lento**Poco a poco accel.****E♭ Clarinet Cadenza**

38

♩=50

38

(lowest pedal note)

39

ff

3/4

Più mosso

40

G

♩=65

41

40

41

3/4

2

42-43

44

E♭ Clar.

45

46

sffp **f** **p**

44

E♭ Clar.

42-43

45

46

sffp **f** **p**

47

48

47

48

sfp **ff**

3

3

49

ff

50

H

49

50

ff

3

6

4

51-54

55

I

♩=72

56

3/4

4/4

2

57-58

ff **p**

Più mosso

55

I

♩=72

56

2

57-58

55

56

57-58

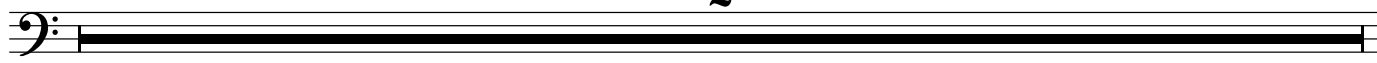
ff **p**

3

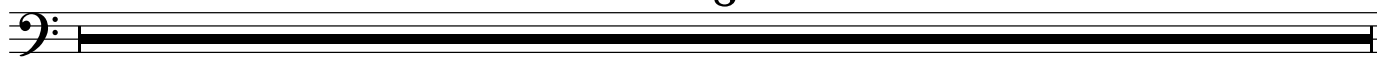
3/4

4/4

2

Lento**J** ♩=50**2**

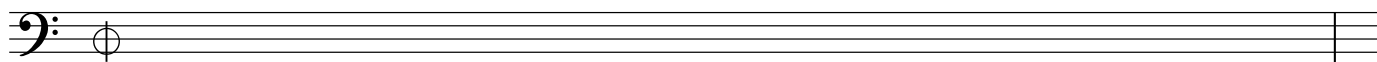
59–60

8

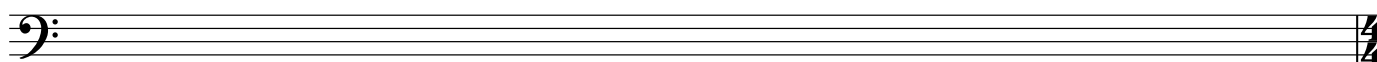
61–68

2

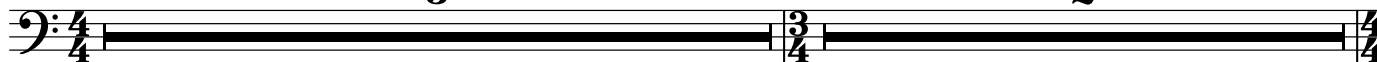
69–70

71 **K** **E♭ Clarinet Cadenza**

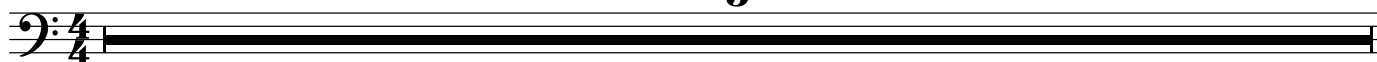
72

**Più mosso****L**

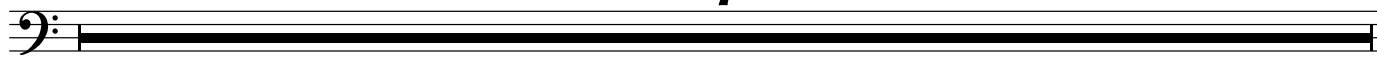
♩=65

3**2**

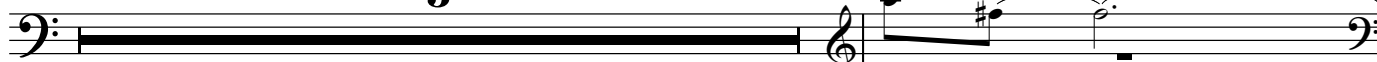
73–75

5

76–77

7

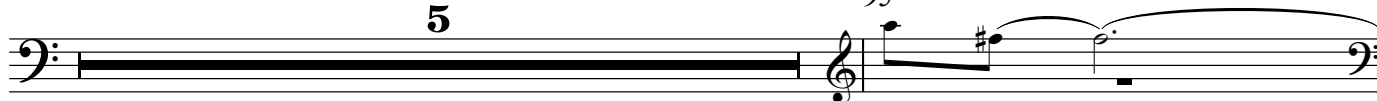
78–82

5

83–89

C Tpt.

95

rit.

90–94

96 97 **M** A tempo **2**


ff

98-99

The musical score for measures 96-99 is shown. Measure 96 begins with a forte (*ff*) dynamic and a half note G2. Measure 97 contains a half note A2. A repeat sign follows, leading to measures 98-99, which are marked 'A tempo' and '2'.


106-107

3

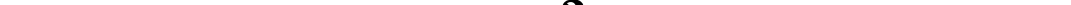


108–110

111

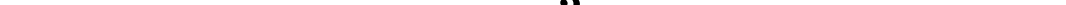
112

2



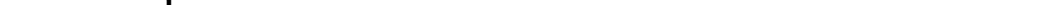
113-114

3



115–117

118 Poco a poco accel.



A musical staff with a bass clef on the left, a single note on the second line, and a treble clef on the right.

119 C Tpt. **Andante** 120 **O** ♩=72

121 **ff** 122 **A tempo** ♩=65

123 124 3 6

125 3 126

127 **Andante** 128 **P** ♩=72

129 **ff** 130

sfp ————— **ff**

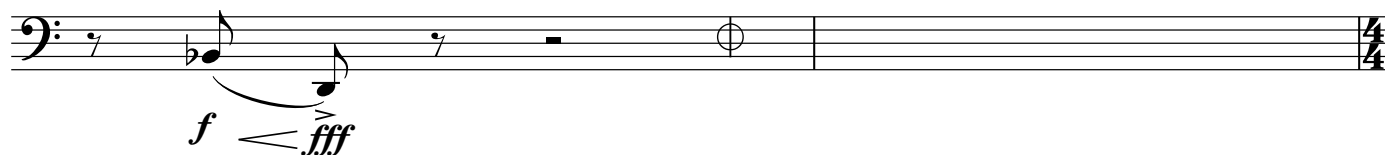
131 132 **ff**

133 134 **Poco a poco accel.**

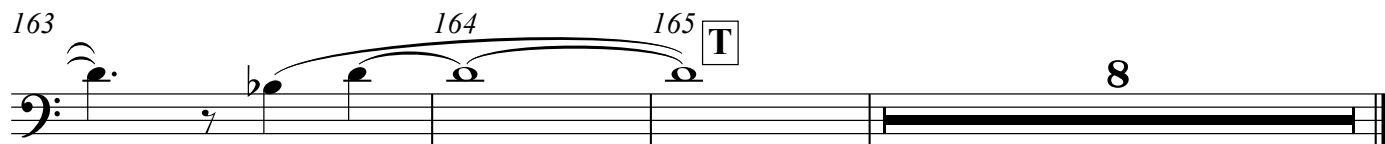
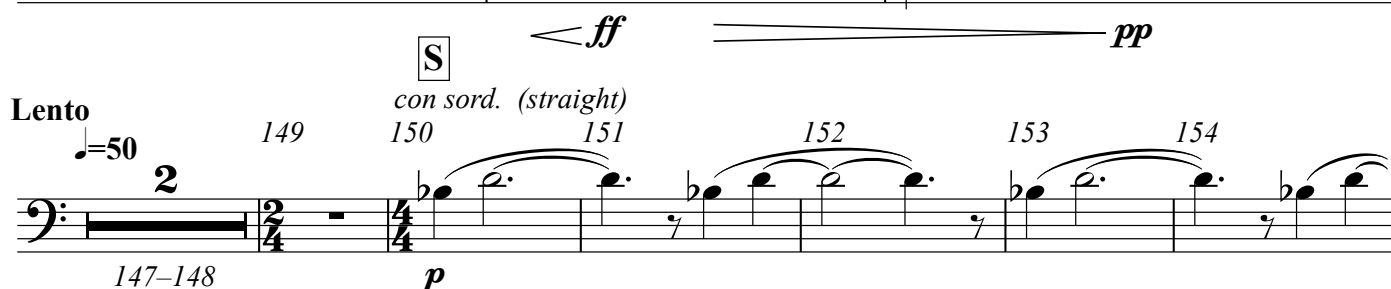
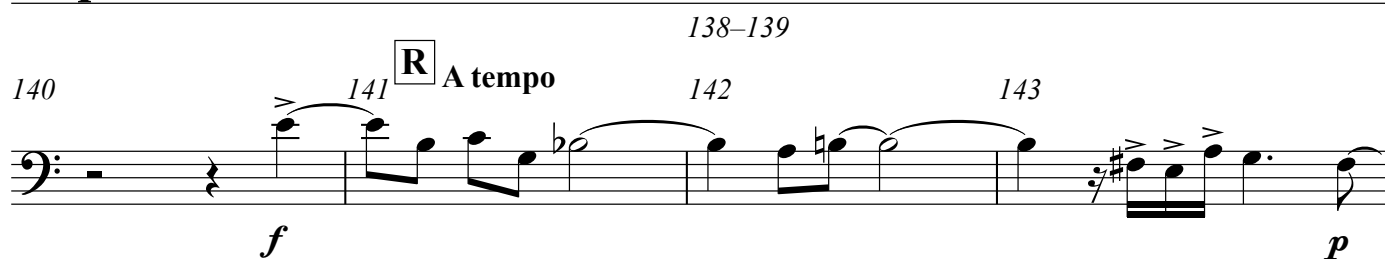
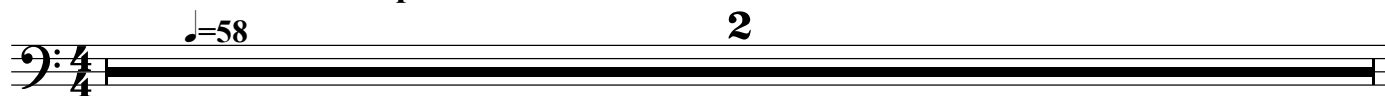
135

Subito doppio meno mosso

136 Presto ♩=107

137 **Q** ♩=54 (Eb Clarinet Cadenza)

Più mosso Poco a poco accel.



niente

166-173